

Surface Area Analysis by BET

Sample Requirement :-

1. Solid Sample - 5 gms.

Applications :-

1. To measure Surface Area of Powder Sample by BET Nitrogen Adsorption Method.
2. Single Point Or Multi Point With Adsorption Isotherm.



CONTACTUS

Send your Enquiries

DR. KETAN MERCHANT [MSc., Ph.D - ICT]



saslab21@gmail.com

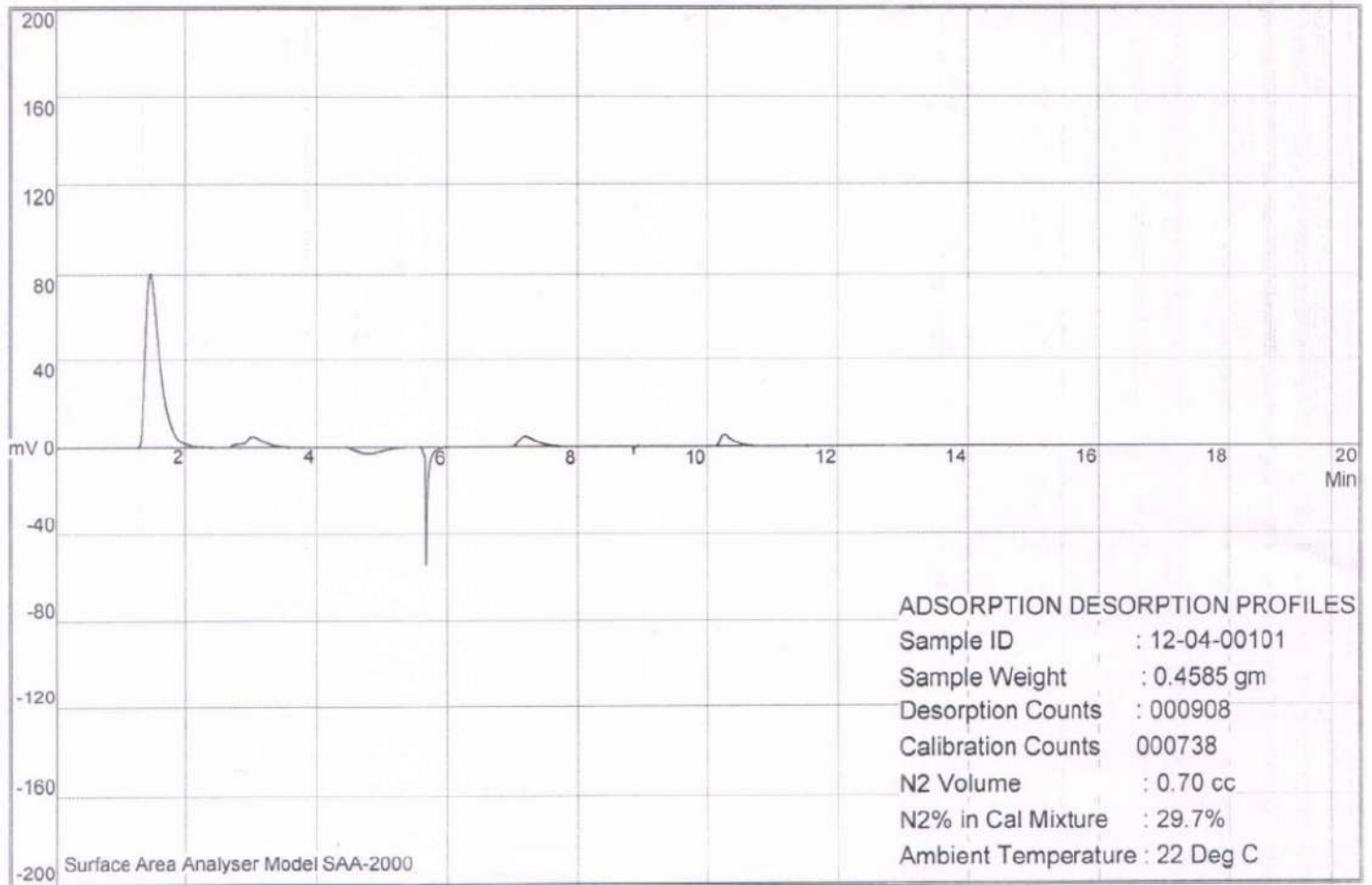
info@saslabindia.com



www.saslabindia.com



+91 8850413449
+91 022 2500 0386
+91 022 2500 0186
+91 022 4215 0502



Analysis Report

BET Surface Area Analysis

Sample Identification : 12-04-00101

Batch No.: Batch No.9467 (202115251)

Analytical Conditions

Ambient Temperature : 22 °C

N2 Conc. in Cal. Mixture : 29.7 %

Regeneration Conditions

Temperature : 250 °C

Purge Gas : Air

Surface Area : 5.347 m²/gm

Date : 15/04/2021

Time : 18:24